

An aerial photograph of a lush green landscape. A paved road curves through the scene, separating a large green field on the left from a dense forest on the right. The sky is filled with soft, white clouds, and the overall lighting is bright and natural.

Data collection method in the Swedish Living Conditions Survey of Children

Jens Malmros
Statistics Sweden



Introduction



The Living Conditions Survey of Children (Children's LCS)

- Yearly survey since 2001
- Living conditions of children in Sweden
 - School
 - Economy
 - Spare time
- Children 12-18 years old



Design

- Supplementary survey to Living Conditions Survey (LCS) until 2019
 - LCS respondent -> children in household
- Large non-response
 - LCS -> adult consent -> child consent
- Design changes to LCS from 2021



Revised design

- Design review
 - Sampling design
 - Questionnaire
 - Data collection
- Stand-alone survey
- Shell table



Data collection method

- Previously, same method as LCS
 - CAPI prior to 2007
 - CATI from 2007
- Stand-alone Children's LCS data collection
 - Mixed mode CATI-CAWI
 - CAWI only
 - Which one is preferred?



Experiment



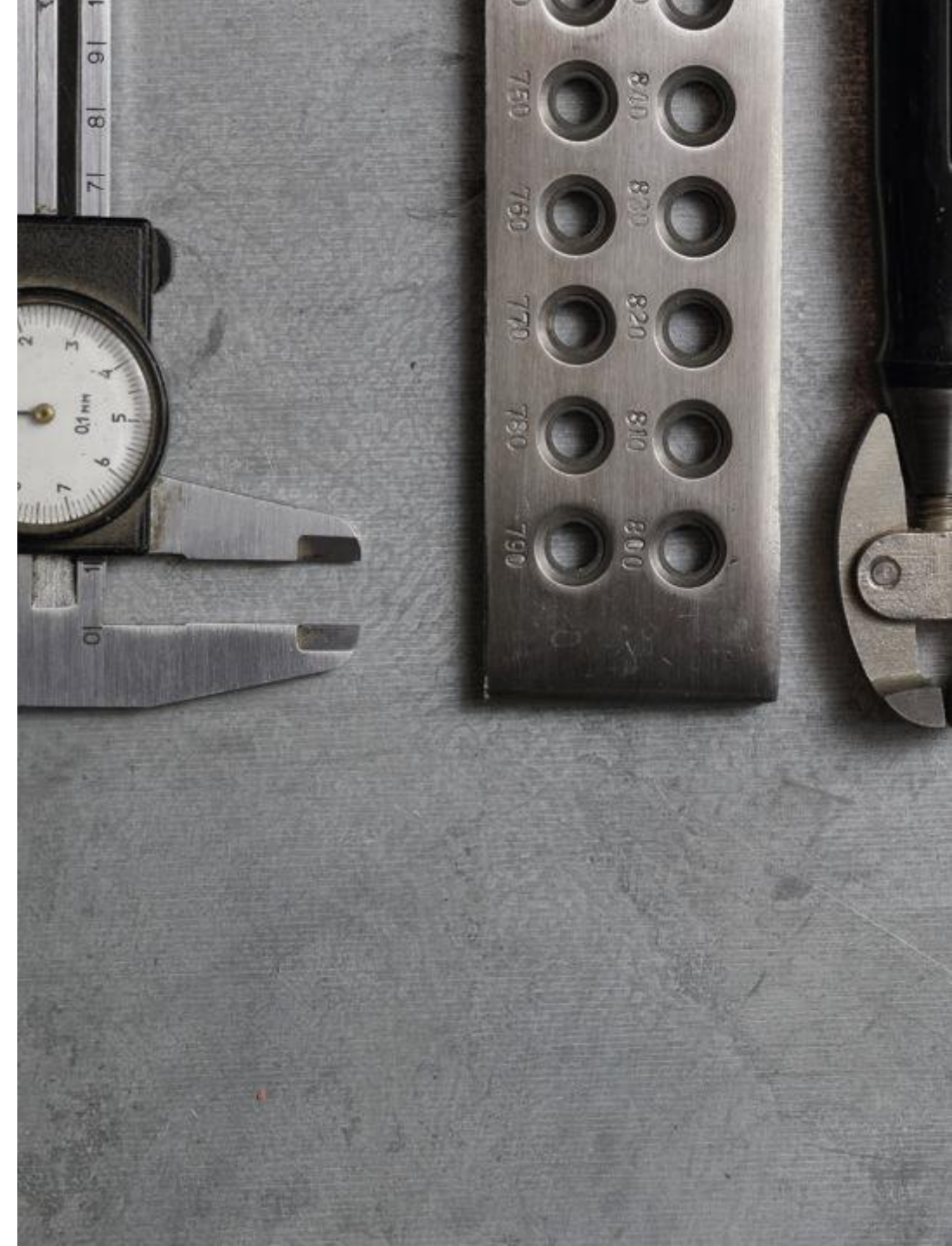
Purpose

- Evaluate if CATI-CAWI or CAWI could be used for the Children's LCS
- Recommend which data collection method to use
- Evaluation of quality with respect to shell table



Experimental design

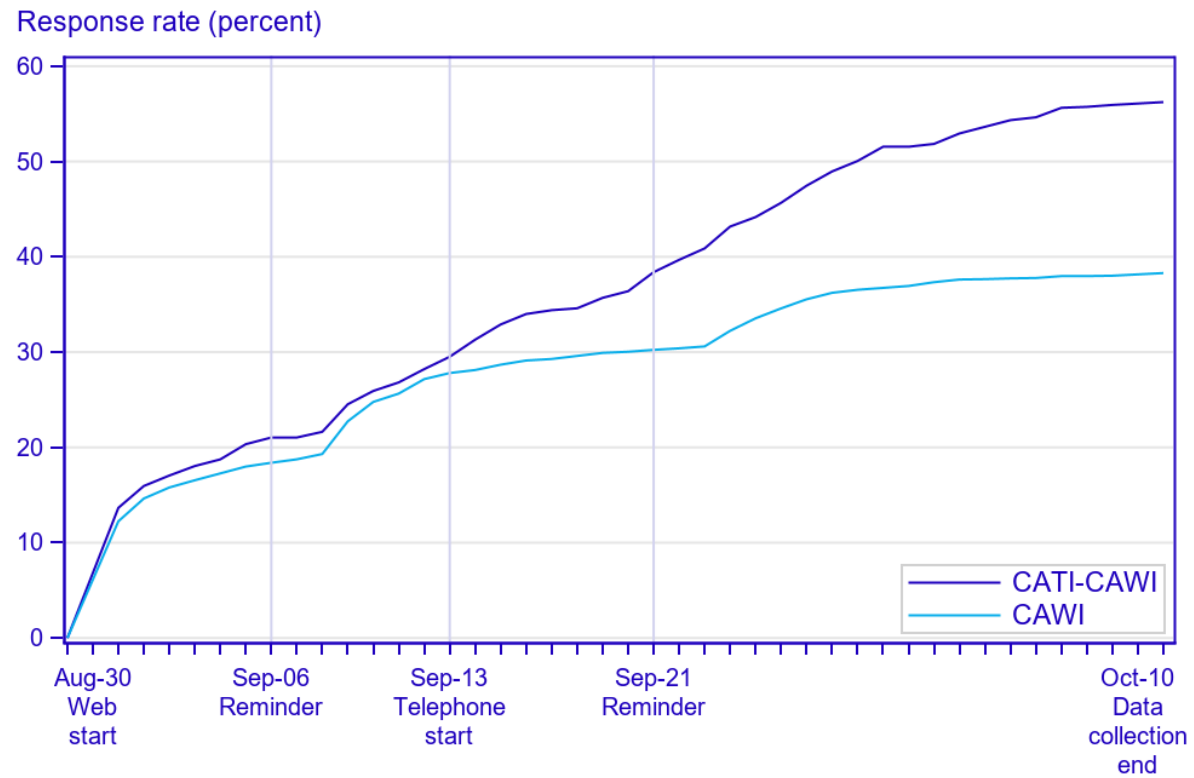
- Simple random sample of size 3 500 from population register
 - 1 000 sample persons in CATI-CAWI
 - 2 500 sample persons in CAWI
- Data collection period of six weeks during autumn 2021
 - Two weeks CAWI only



Data collection

	CAWI		CATI-CAWI	
	Number of respondents	Response rate	Number of respondents	Response rate
Web	960	38 %	436	43 %
Telephone			128	13 %
Total	960	38 %	564	56 %

Data collection

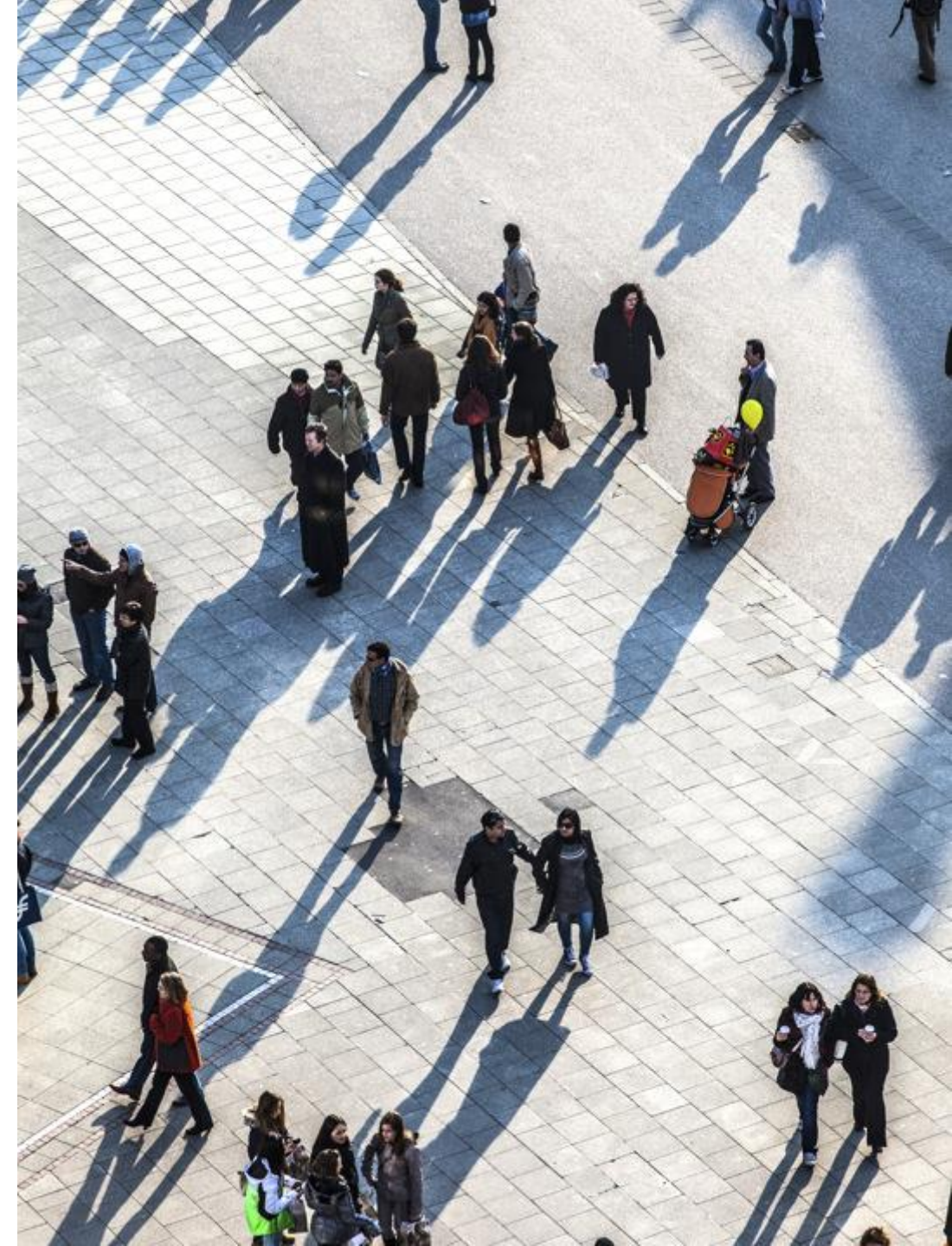


Results



Sample sizes

- The cost of CAWI is four times smaller than in CATI-CAWI
- Adjustment of sample size for comparison
 - CATI-CAWI 10 000
 - CAWI 14 685
- Larger sample size in CAWI in actual survey



Response rates and number of respondents

- Overall response rate
 - CAWI 38 %
 - CATI-CAWI 56 %
- Similar distribution of response rates in domains
- Suppressed estimates for one domain in each data collection method



Bias estimates of register variables

Register variable	Number of bias estimates significantly different from 0	
	CATI-CAWI	CAWI
Has one sibling	40	22
Has one caregiver	27	32
Is born in Europe	36	11
School has independent organiser	33	50
Lives in Stockholm region	29	16
Lives in a household with financial support	17	10
Lives in a household whose equalized disposable income is lower than the median income.	34	33

Bias estimates of register variables

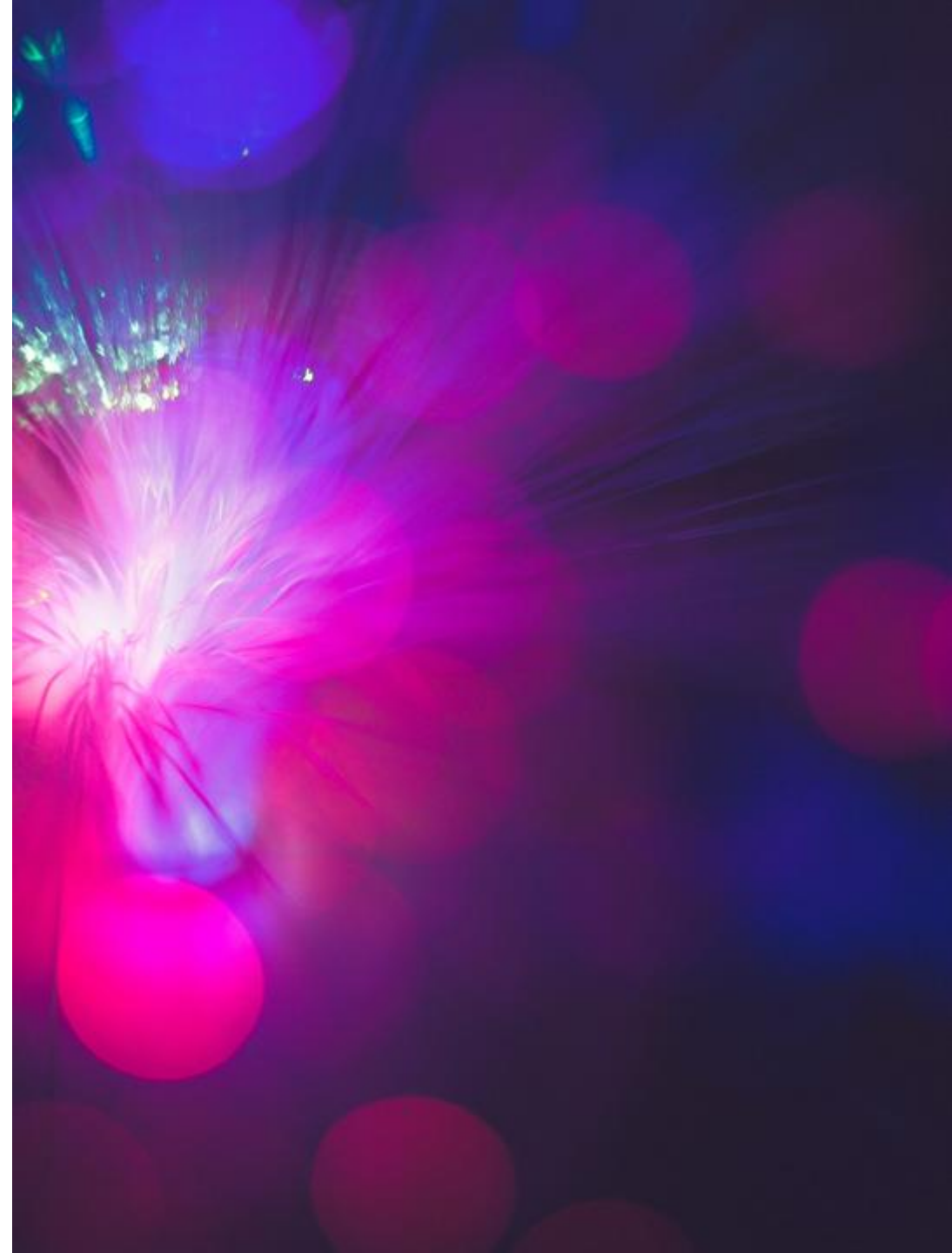
Register variable	Statistic	p-value
Has one sibling	11	1
Has one caregiver	-6	7
Is born in Europe	10	2
School has independent organiser	-9	3
Lives in Stockholm region	3	61
Lives in a household with financial support	7	1
Lives in a household whose equalized disposable income is lower than the median income.	4	39

Conclusion and future work



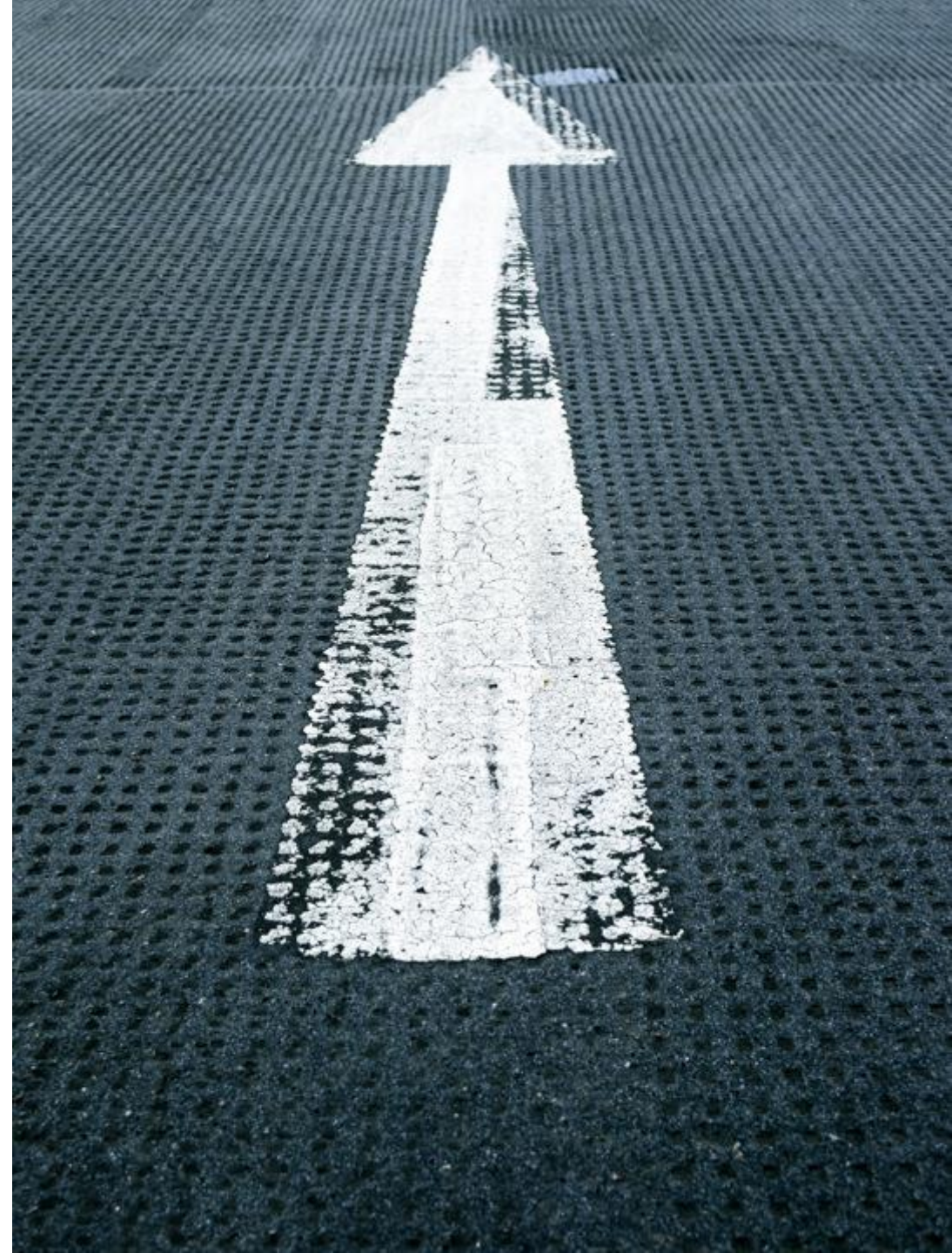
Conclusion

- Adequate quality for both data collection methods
- Quality is comparable for both data collection methods
- Sample size larger in CAWI
- Recommendation to use CAWI
- Children 12-18 years old seem to be a population fit for surveys



Future work

- First stand-alone Children's LCS 2023
- Every 3rd year
- CAWI
- Sample size 30 000
- Proxy interviews by telephone



Data collection method in the Swedish Living Conditions Survey of Children

Jens Malmros

jens.malmros@scb.se

