

Matched Educational Data (MED)

Methods for matching and analysis

Alex Skøtt Nielsen

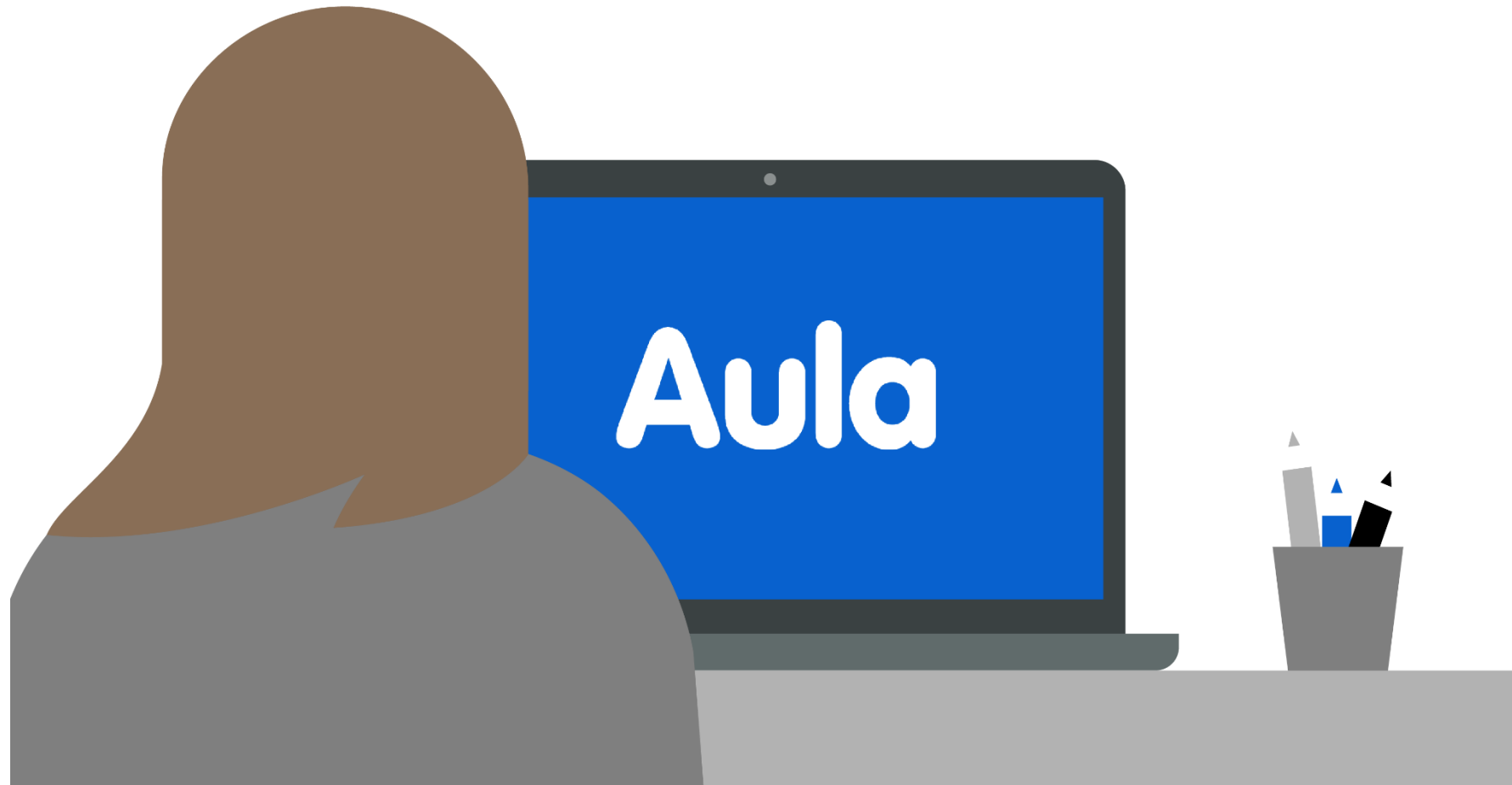
Jens Bjerre

Population and Education – Statistics Denmark

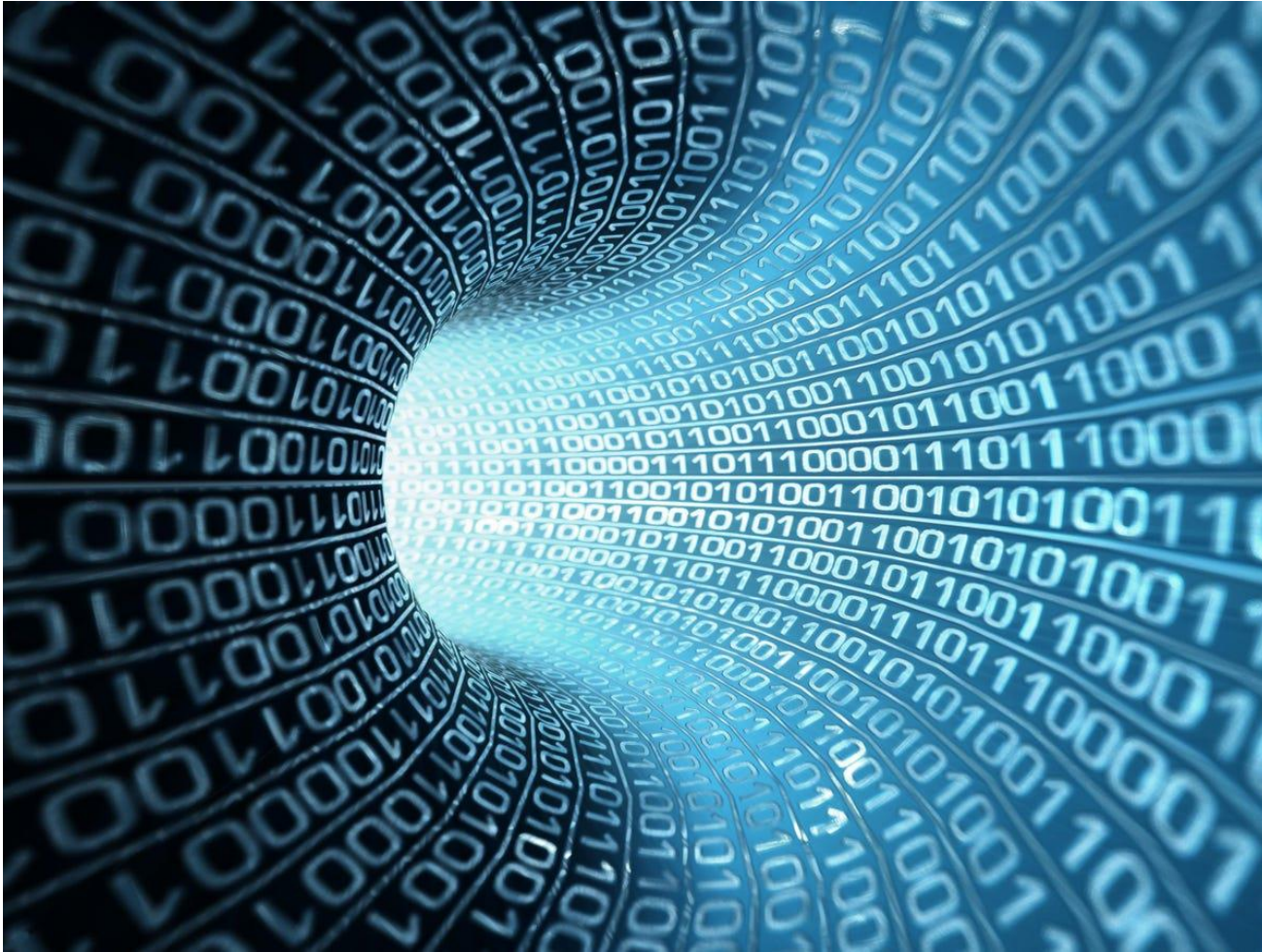
The vision of the MED-register



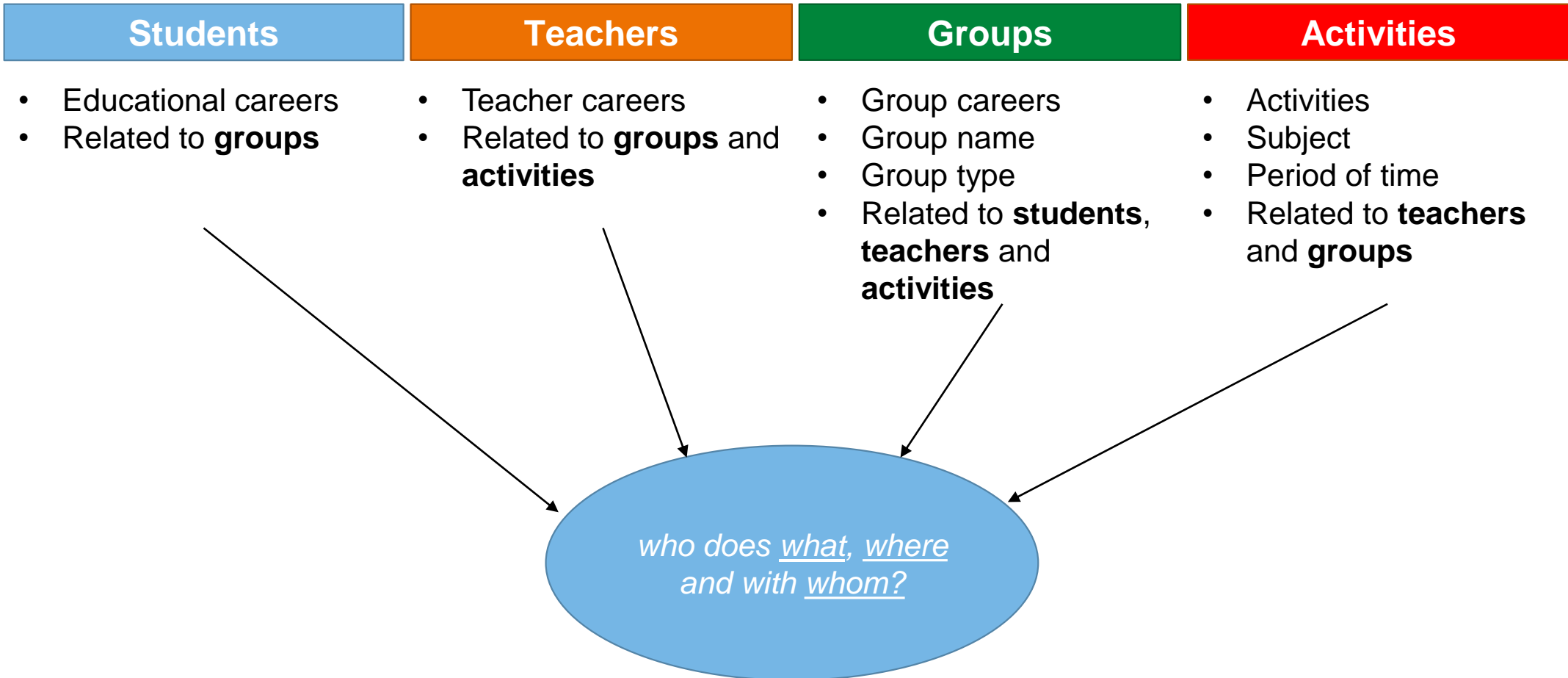
The Aula platform



High frequency datacollection



Model



A school year

Class of 4. B	Teacher	Subject	Hours	Competency
☺ Anders	☺ Andersen	Danish	210	Formal
☺ Bertram	☺ Bentsen	Danish	105	Equivalent
☺ Clara	☺ Carstensen	History	60	Formal
☺ Diana	☺ Dahl	Mathematics	150	Formal
☺ Erik	☺ Eriksen	Visual arts	60	Equivalent
☺ Frederik	☺ Frederiksen	English	60	Non-formal
☺ Gustav	☺ Grøndahl	Cooking	90	Equivalent
☺ Hans	☺ Grøndahl	Design, wood and metalwork	90	Non-formal
☺ Isabel	☺ Jacobsen	Physical education	90	Formal
☺ Jan	☺ Kallesen	Christian studies	30	Equivalent
☺ Kasper	☺ Larsen	Music	60	Formal
☺ Lise	☺ Mikkelsen	Natural sciences/technology	90	Formal

A school day

Effect of double lessons?

Effect of two simultaneous teachers?

Period of time	Activity	Teachers	Group
8.15 – 9.00	Physical education	Dahl, Eriksen	PE 8.A + 8. B
9.00 – 9.45	Danish	Eriksen	8. B
10.00 – 10.45	Danish	Eriksen	8. B
10.45 – 11.30	History	Substitute teacher	8. B
12.00 – 12.45	French	Larsen	FRENCH 8.
12.45 – 13.30	French	Larsen	FRENCH 8.
13.45 – 14.30	Mathematics	Grøndahl	8. B
14.30 – 15.15	Mathematics	Grøndahl	8. B

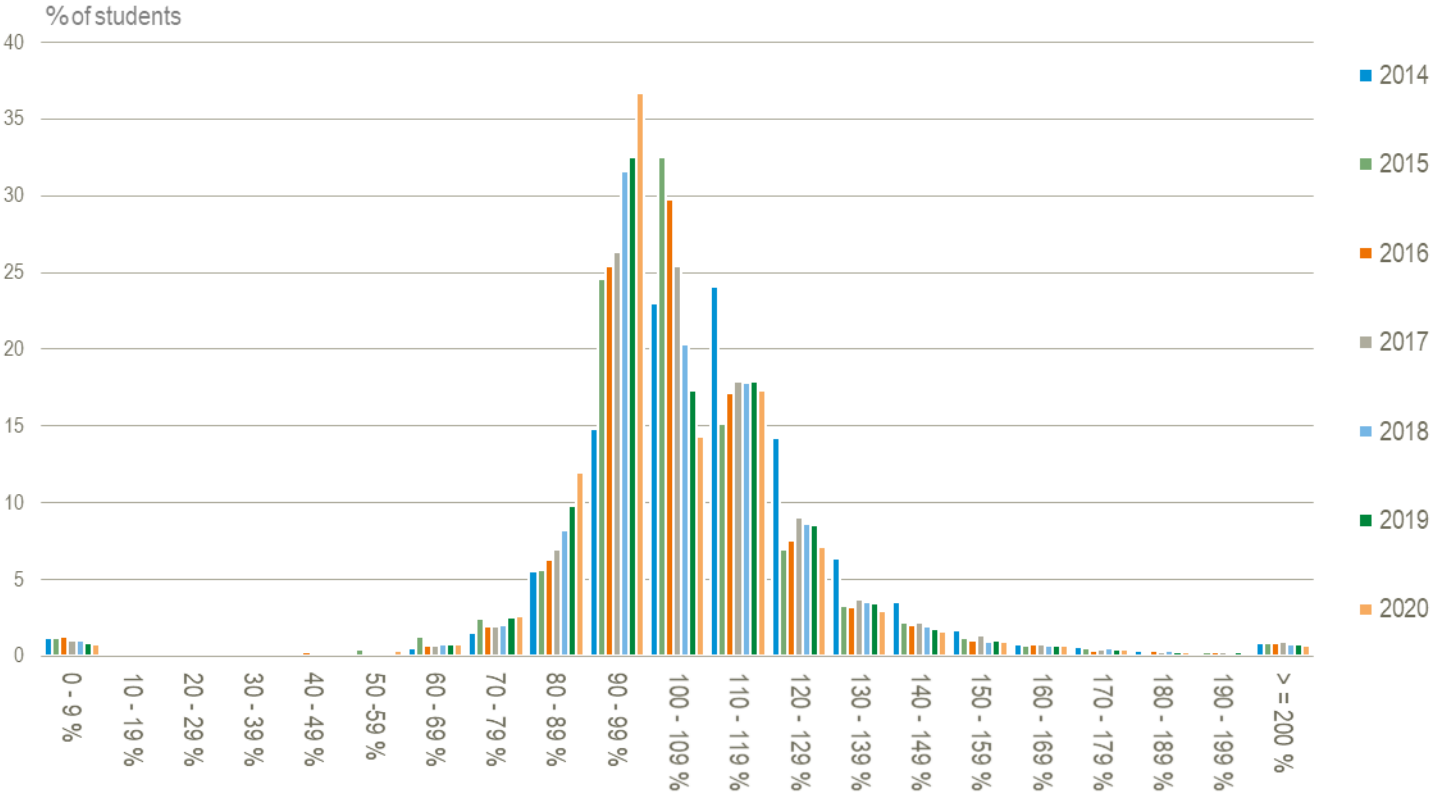
Effect of two substitute teachers?

Effect of two **long** hours of mathematics late afternoon?

500.000 students, 200 school days = 100.000.000 school days every year (big data!)

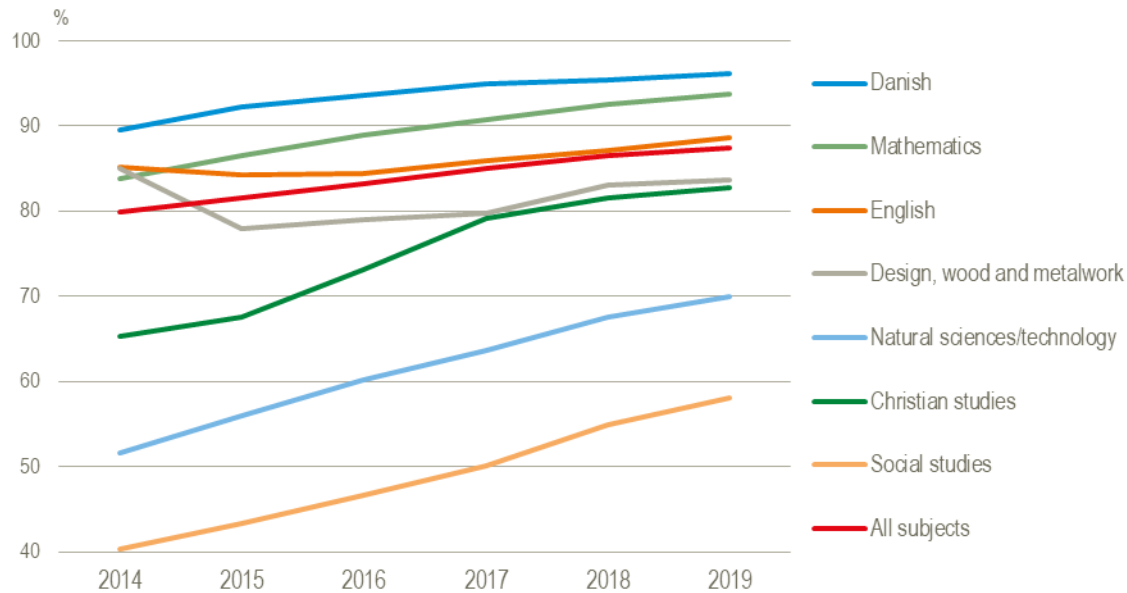
Validating the data

Observed versus expected sum of teaching hours per student



Results

Share of lessons with teachers who have teaching competency in the subject



Final grades per student by number of teacher changes in the last six years of primary school

